



ADAMA

# Quali-Pro® Triumph® Advance

The fast-acting Pythium specialist

## Product overview

- Quali-Pro® Triumph® Advance is a contact and systemic fungicide containing 800g/L metalaxyl-m in an easy-to-use soluble liquid concentrate (SL) formulation.
- It is registered for the control of pythium (leaf blight, root rot and seedling damping off) in all cool and warm season turf grasses.
- It has minimal odour because the product does not contain petroleum solvents. As a result, Quali-Pro® Triumph® Advance mixes completely with water and may be tank mixed with many commonly used fungicides and liquid fertilisers.

## Mode of action

**GROUP 4 FUNGICIDE**

**Metalaxyl- M**, the active ingredient in Quali-Pro® Triumph® Advance, is a MOA group 4 systemic fungicide. It is rapidly taken up by the plant's green tissue, roots and stems - in as little as 30 minutes - and transported upwards (acropetally) in the plant's vascular system to leaf tips. It provides control of pythium from within the plant, inhibiting fungal growth and reproduction, and protects new growth produced after application.

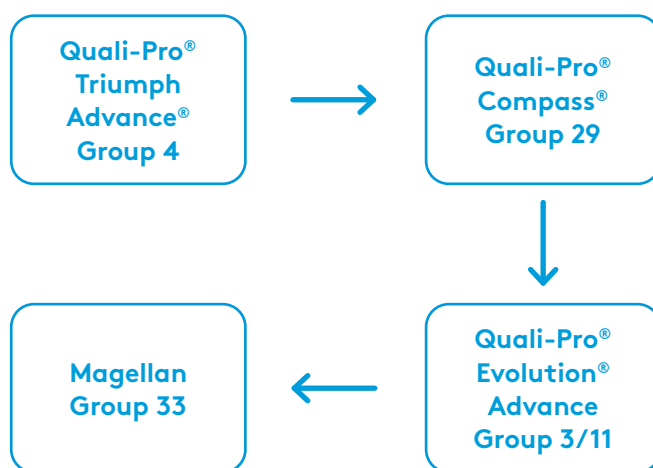
While most often applied as a preventative, it also has curative effects, which is particularly important with Pythium foliar blight and for contact action in the soil.

## How to get the best results from Quali-Pro® Triumph® Advance

Ensure even application in order to achieve good disease control. Use Quali-Pro® Triumph® Advance in a preventative fungicide program containing fungicides from different chemical groups.

Begin applications before symptoms occur when conditions first favour disease. Rain, humidity greater than 90% and high temperatures of 30-40°C over consecutive days will favour pythium development.

Continue applications while conditions remain favourable for disease development using registered Pythium fungicides of other MOA groups. For example:



Apply no more than 2 consecutive Quali-Pro® Triumph® Advance applications at 14 - 21 day intervals for Pythium. It is recommended that Quali-Pro® Triumph® Advance not be used more than 4 times per season.

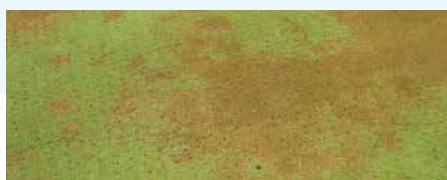
# Quali-Pro® Triumph® Advance

## Use Rates

Rates, water spray volume and wash-in (if required) is determined by the disease targeted.

**Pythium foliar blight** – 510ml-1.05L/ha in 350 to 500L of water/ha. (Use higher water volumes for crown targeted diseases). Repeat treatment after 21 days when using the lower rate of 510ml/ha. Under conditions of severe disease pressure, or when using as a preventative treatment, use 1.05L/ha on a 28 day spray interval.

**Pythium crown and root rot** – 510ml-1.05L/ha in a minimum of 1000L of water/ha. Irrigate with 6-10mm water as soon as possible after application to wash Quali-Pro® Triumph® Advance into the root zone. Make a second application 28 days later if required or as part of a preventative fungicide management program.



Pythium Leaf Blight



Pythium Root Rot



Seedling Damping Off (*Pythium* spp.)

## Application Recommendations

Good disease control requires even, thorough coverage of the target area, or in the case of soil borne diseases, even application and wash-in to a depth where target disease exists.

**For foliar diseases**, use of AIXR11004 or AIXR11005 nozzles at 5km/hr and 3 bar pressure is recommended.

**For Root and crown disease**, Metalaxyl-m will be absorbed by foliage if left on the leaf and move upwards in the xylem from the point of application. If left for too long on the foliage after application, later wash-in will result in less active ingredient reaching the soil and possible poor results against surface and soil-borne pythium diseases.

It is best to use flood jet or air induction (11008) nozzles, and wash in with at least 6mm irrigation (immediately after application if possible, but no longer than 1 hour after application).

FEATURES	BENEFITS
High loading of active ingredient	Less cost of product, storage, transport and empty drum disposal compared with other Pythium fungicides.
Rapid movement into the plant	Will be within the plant in as little as 30 minutes, acting immediately on Pythium disease.
Easy to remember rate	1L bottle = 1ha of greens (top rate)
Works on all forms of Pythium diseases	Controls Pythium Leaf Blight, Pythium Root Rot and Seedling Damping Off



Scan here for more information

<sup>TM</sup>Trademarks or <sup>®</sup>Registered trademarks of an ADAMA Agricultural Solutions Ltd Company.  
\*Registered trademarks. Please note: This information is not intended to replace the product label.  
Always read the complete product label appearing on the container before opening or using products.